



# MONTHLY MEMBERSHIP PROGRESS REPORT

District 26 M6

Results as of: 04/30/2019

GMT: GREGORY GILLIAM

LOCATION MISSOURI

GMT CA

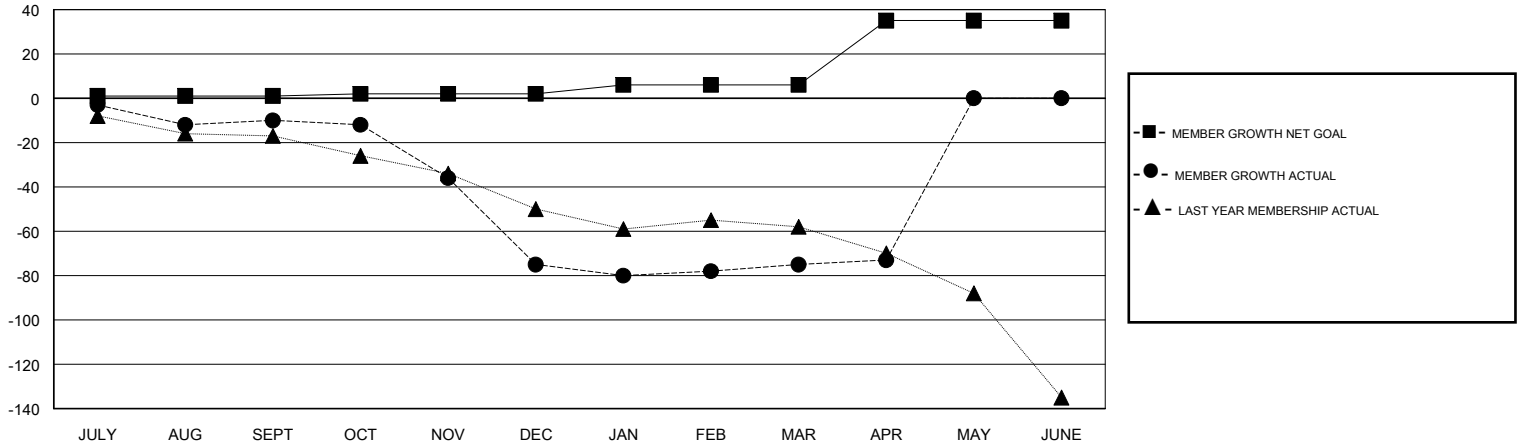
Clubs			
RESULTS FOR 2018-2019			
QUARTER	NEW CLUB GOAL	NEW CLUBS	DROPPED CLUBS
JULY/AUG/SEPT	0	0	0
OCT/NOV/DEC	0	0	2
JAN/FEB/MAR	0	0	0
APR/MAY/JUNE	1	0	0

Members			
RESULTS FOR 2018-2019			
QUARTER	MEMBER GROWTH NET GOAL	MEMBER GROWTH ACTUAL	DROPPED MEMBERS ACTUAL (including transfers)
JULY/AUG/SEPT	1	18	25
OCT/NOV/DEC	1	8	73
JAN/FEB/MAR	4	17	16
APR/MAY/JUNE	29	14	11

GOALS AND ACTUAL NEW CLUBS CUMULATIVE



GOALS AND ACTUAL MEMBERS CUMULATIVE



DROPPED CLUBS: 2	23 CLUBS OF 43 ADDED 1 OR MORE NEW MEMBERS	<u>GENDER DISTRIBUTION</u> MALE 639 (67.62%) FEMALE 306 (32.38%) Women Percentage Fiscal Year Goal: 45%
<u>DROPPED MEMBERS</u> DECEASED 12 CLUB CANCELLED 6 OTHER 107 TOTAL 125	<a href="#">CLICK HERE FOR CUMULATIVE MEMBERSHIP DATA</a>	TOTAL FAMILY UNIT MEMBERS 197 FAMILY MEMBERS PAYING HALF DUES 99